



BAGATELLE

CARE HOME





Greenock Medical Aid Society (GMAS) was founded in 1798 and is a voluntary organisation providing care for older people. As a registered charity we provide two care homes in Greenock with full nursing support at Bagatelle and Glenfield. Each home delivers compassionate responsive care and support. In partnership with Riverclyde Homes we also operate a sheltered housing complex at Bagatelle Court.

If you or a loved one are considering joining the Bagatelle family, you can all count on a warm welcome. We cordially invite you, along with family and friends to visit the home. Take time to meet us all and we can provide you with all the information you require, including details of our Care Inspectorate reports, policies and procedures.

Here at Bagatelle, we provide person centred nursing care in small group living environments. We are situated in the west end of Greenock in an enviable location with stunning views of the river Clyde. We are firmly entrenched in the local community and have strong links with many groups, clubs, schools and agencies in the area.

The building itself was built in 1841 and is one of the finest buildings in the West End of Greenock with a prestigious history. It was purchased by GMAS in 1988 and has been extended and converted into a first class modern home providing exemplary nursing care.

Bagatelle provides fully furnished rooms suited to the needs of the individual. We do however encourage residents to bring personal items, such as furnishings, ornaments and photos that will help you feel at home. As part of our safety procedures, all items will be checked to ensure they comply with fire regulations and electrics will undergo a (P.A.T.) Portable Appliance Test.



www.gmas.care

BAGATELLE A – Z GUIDE

Activities

We have a great team of dedicated activities staff who arrange daily entertainment and activities in consultation with our residents.

Typical activities are reminiscence, carpet bowls, games, discussion groups, gentle exercise, music workshops, art and craft classes, media studies, concert parties, a gentlemen's group and special outings.

Advocacy

Members of the House Committee in Bagatelle visit regularly and act as advocates for residents.

Inverclyde Advocacy Service is also available on request.

Birthdays and Special Occasions

Birthdays and special occasions are all marked in a suitable manner and celebrated appropriately.

Car Parking

There is limited space at Bagatelle for car parking, the area adjacent to the main door having to be reserved for ambulances or other emergency vehicles.

Care Plans

On your arrival with us, your chosen key worker will work with you and your family developing a Care Plan entirely right for you. This will take in to consideration all your likes, dislikes, needs, wants and individual requirements.

Communal Area

We encourage small group living and have a number of lounges and dining areas accessible to residents in addition to their own room.

Complimentary Therapies

Our highly trained in house therapists offer a range of complimentary therapies at no extra charge. These include aromatherapy, massage, manicures etc.

Church

All faiths and beliefs are supported and respected at Bagatelle. Church services take place on a regular basis and Ministers/Priests and church visitors are always welcome in the home.

Doctors

If you have lived locally and are registered with a local GP, you may wish to remain with your own doctor. We however have our own allocated GP who visits Bagatelle on a weekly basis and also as required.

Final Wishes

We respectfully consult with residents and their families to ensure that this topic is covered with dignity and respect. This sensitive information is then adhered to and stored in your care plan for reference.

Fire Procedures

Bagatelle is a non-smoking environment and we have regular fire testing drills and maintenance checks.

Food

Meal times are an important focus. Our aim is to provide tasty, nutritious, appetising meals. Our multi choice menus are on display, but we are also able to cater for individual dietary requirements.

Healthy snacks, fruit and home baking are always available along with hot and cold drinks at all times.

Hairdresser

Our in house hairdresser is available every Monday.
(A small charge is made for this).

House Committee

Each home has a House Committee that meets once a month in the home. An "Amenity Fund" is maintained by fundraising events. A programme of concerts, video shows and other entertainment also comes within the remit of this Committee. The friendly "Home Visiting" offers the opportunity for residents to talk to committee members passing on praise, concerns or suggestions to Management.

Inspection

All Care Homes are subject to an annual inspection by the Care Inspectorate.

Copies of the inspection are available at www.careinspectorate.com.

Laundry

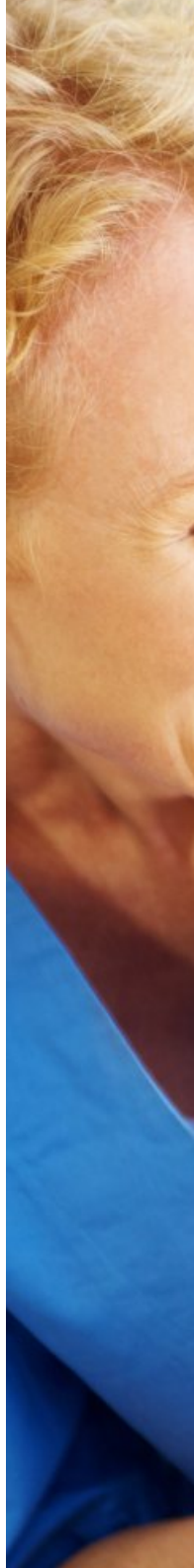
We have a dedicated team of in house laundry staff who will undertake your laundry requirements. Labelling services are provided at no extra cost. Clothing should also be suitable for machine washable/tumble dry cycles. Dry cleaning is also available at an additional cost.

Library

A range of books, videos, DVDs and special books with audio tapes, can be found in the library located in each lounge. For any resident who is an avid reader, books on specialist subjects can be obtained on loan through the Council's 'Home-bound Service'.

Mail

Personal mail/email is delivered to each resident daily. Assistance can be given, where required, to read or respond to correspondence. Alternatively if you wish mail/email to be given directly to a loved one, that can also be arranged.





www.gmas.care

Mini Bus

A mini bus, which is adapted for wheelchair users is available to Bagatelle for the benefit of residents. The mini bus enables residents to go on organised trips and visits to local places of interest.

Newspapers and Magazines

Your favourite newspapers and magazines can be delivered to your room.

Nurse Call System

We have introduced an innovative silent Nurse Call system which does not disturb the tranquility of the home.

Pets

We love having well behaved dogs to visit. Your friends and family are welcome to bring your favourite furry friends along at any time, as long as they are on a lead.

Policies

In keeping with sound business practice, we have introduced a set of transparent policies and procedures designed to meet statutory care requirements. These may be accessed at any time and many shall be explained in detail, such as our complaints procedure.

Physiotherapy

Our in house Physiotherapist offers a large range of person centred treatments designed to promote long-term mobility and wellbeing.

Safety & Security

For the safety and security of our residents we have a security entrance system and key coded doors and stair barriers in place.

Visitors and staff are required to sign in and out and the signing-in books are located at the reception.

Bagatelle Care Home

Smoking Policy

Bagatelle Care Home operates a No Smoking policy within the building and its grounds.

Staff

We have a highly experienced dedicated team of responsive and caring staff. Staff development is seen as an essential facet of the GMAS ethos. We have an ongoing programme of mandatory and needs led training. All nursing and care staff are registered with the relevant professional bodies.

Telephones

Many of our residents have mobile phones, but if you would like a landline installed in your room, this can be arranged at your own expense.

Visitors

Visitors are welcomed at any time.

You may also join your loved one for a meal with prior notice.

Wifi

We have complimentary wifi throughout the home including individual bedrooms.









BAGATELLE

CARE HOME

Email: admin@gmas.care

Phone: 01475 729424

Website: www.gmas.care

Facebook: www.facebook.com/greenockmedicalaidsociety

Address: Bagatelle Care Home,
47 Eldon Street,
Greenock,
PA16 7RA